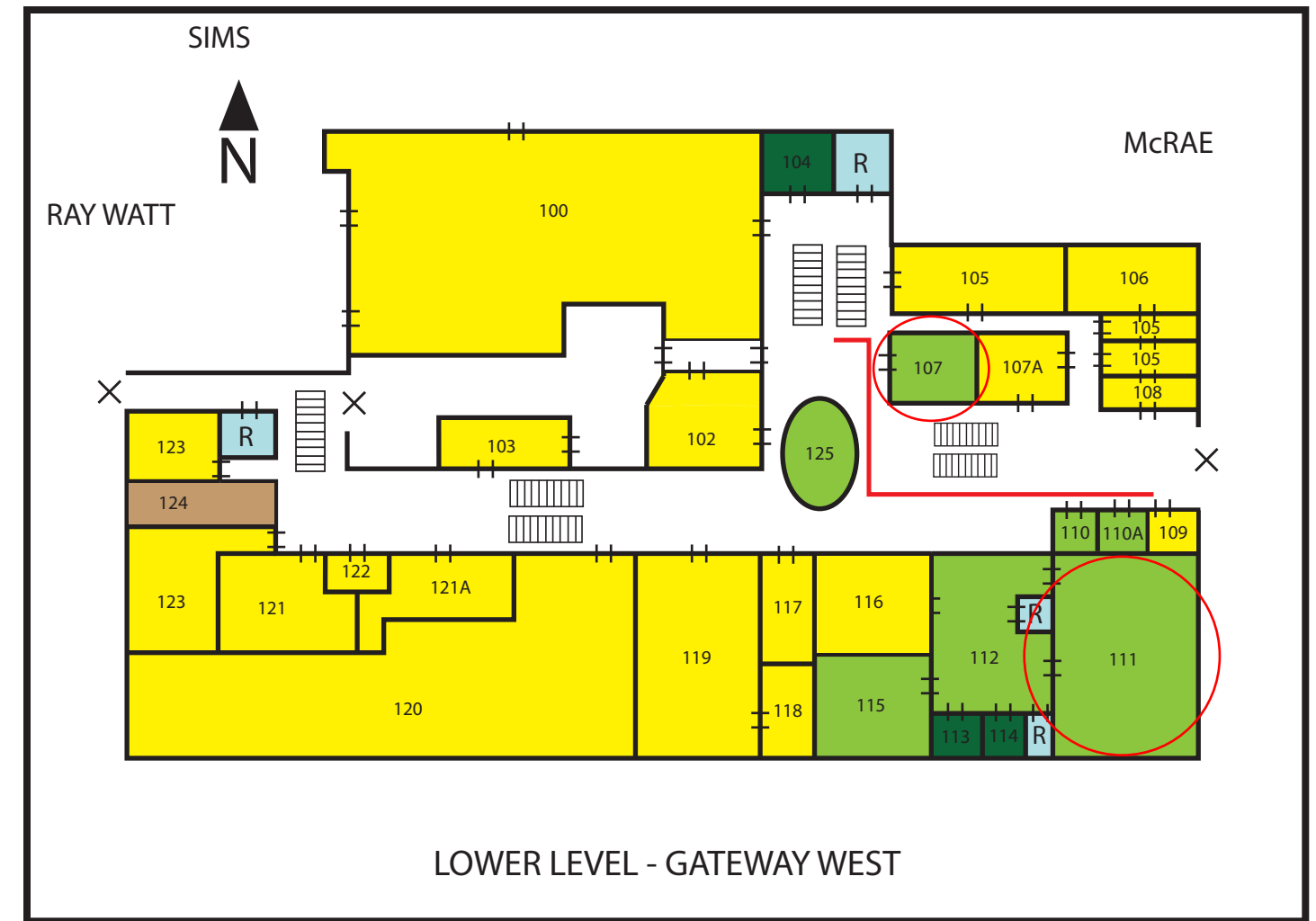


UPPER LEVEL - GATEWAY WEST



LOWER LEVEL - GATEWAY WEST

200 - Ysleta Room

- 201 - Board Projection and Audio Room
- 202 - Tigua Room
- 203 - Mission Room
- 204 - Rio Grande Conference Room
- 205 - Security
- 206 - Security

- 207 - Internal Auditors
- 208 - Telecommunicators Room
- 209 - Culinary Arts
- 210 - Human Resources/Personnel & Risk Management
- 211 - Application/Computer
- 212 - Associate Superintendent of Human Resources
- 213 - Board Liaison
- 213A - Chief of Staff
- 214 - Superintendent
- 215 - Superintendent's Staff

- 216 - El Paso Room
- 217 - Associate Superintendent of Operations
- 218 - Finance: Accounting, Cashier, Budget Planning, Payroll, Purchasing, Records Management & Transcripts, Student Attendance
- 219 - Associate Superintendent of Finance
- 220 - Payroll
- 221 - Employee Lounge
- 222 - Theatre Balcony
- 223 - Technology Business/Student Systems
- 224 - Technology Information Systems
- 225 - Facilities & Construction
- 226 - Training Lab
- 227 - Employee Relations
- 228 - Public Relations
- 229 - Food and Nutrition
- 230 - ROTC
- 231 - Substitute Center & Employee Records
- 232 - Mail/ Printshop Services

- 100 - Division Of Academics: Assessment, Research, Evaluation and Accountability, Instructional Technology Department, Career and Technology Education, MSP Math and Science, Professional Development
- 102 - Associate Superintendent of Academics
- 103 - Juarez Conference Room
- 104 - Custodial Services Room
- 105 - Instructional Media Technology
- 106 - Multimedia Computer Lab
- 107 - Sierra Room**
- 107A - Library
- 108 - Health Clinic
- 109 - Hueco Room (Training Lab)
- 110 - Franklin Room
- 110A - Guadalupe Room
- 111 - Theatre**
- 112 - Gallery

- 113 - Setup Crew
- 114 - Head Custodian
- 115 - Capitan Room
- 116 - Coordinator of Health Services/ Ysleta Educational Foundation
- 117 - Guidance & Counseling Student Advocacy
- 118 - Compensatory Education
- 119 - Student Services
- 120 - Special Education
- 121 - Athletics/ Junior ROTC
- 122 - Esperanza Room
- 123 - Research, Testing & Evaluation
- 124 - Freight Elevator
- 125 - Atrium

- Academics
- Superintendent's Office
- Finance
- Operations
- Common Areas
- Human Resources

-  Exits
-  Stairs
-  Elevators
-  Public Phones
-  Restrooms