

Tenor Trombone #1-2016

$\text{♩} = 92-98$

A

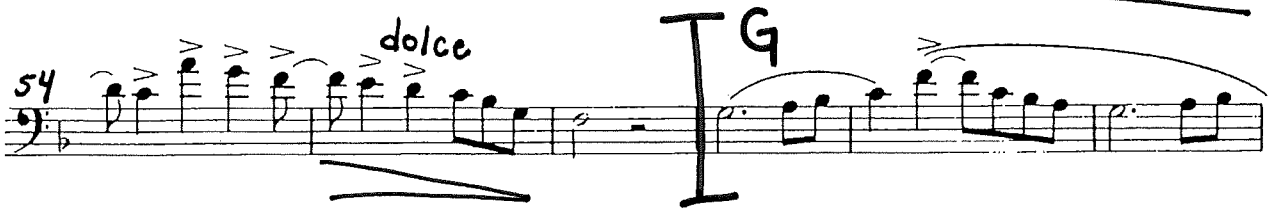
Allegretto ($\text{♩} = 92$)

No. 21

40 

45 

49 

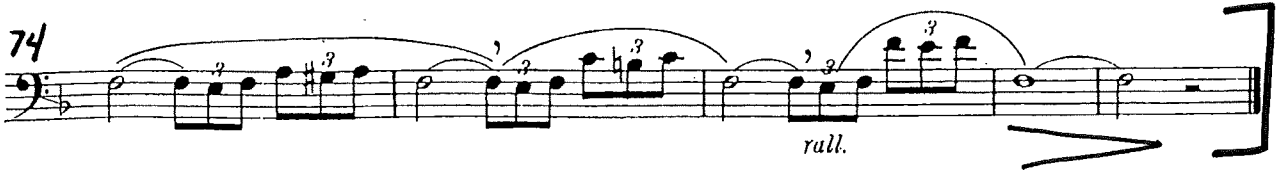
54 *dolce* 

60 

64 

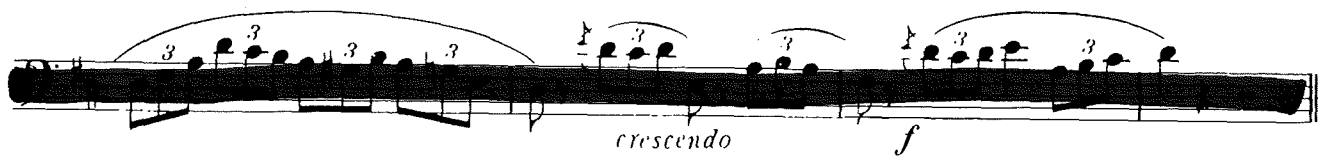
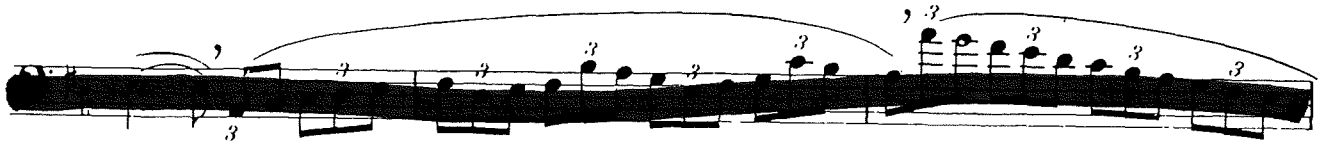
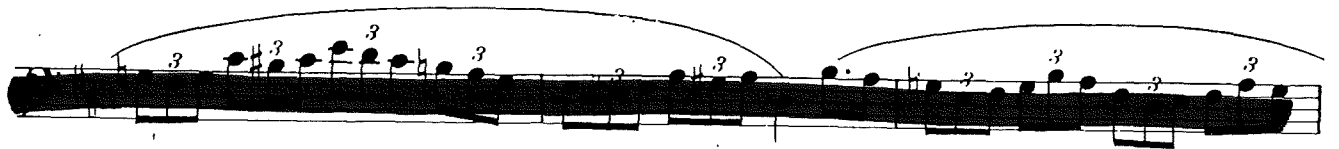
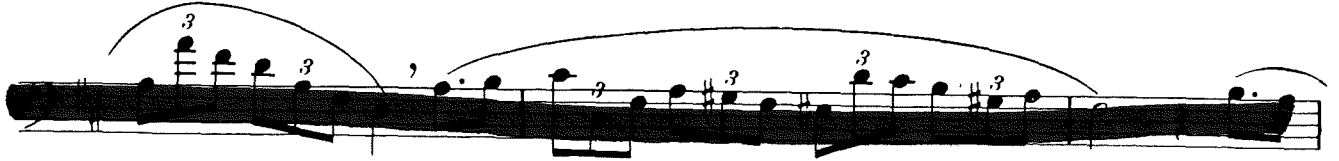
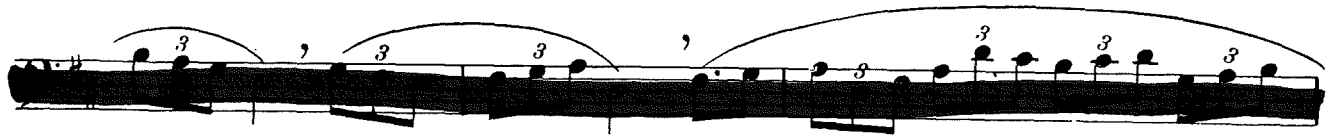
67 

70 

74 *rall.* 

Tenor Trombone #2-2016

$\text{♩} = 58-66$



B Andante cantabile ($\text{♩} = 58$)



17 Poco più mosso .
f P

22

27 rallentando a tempo p f

32 rallent. - -

36 rallent. - -

40 a tempo p

46 f p f p

52 crescendo

58 f p pp

Tenor Trombone #3-2016

42

$\text{♩} = 54-64$

C

Allegretto grazioso ($\text{♩} = 60$)

No. 33

47

51

54

59

62

65

rallent